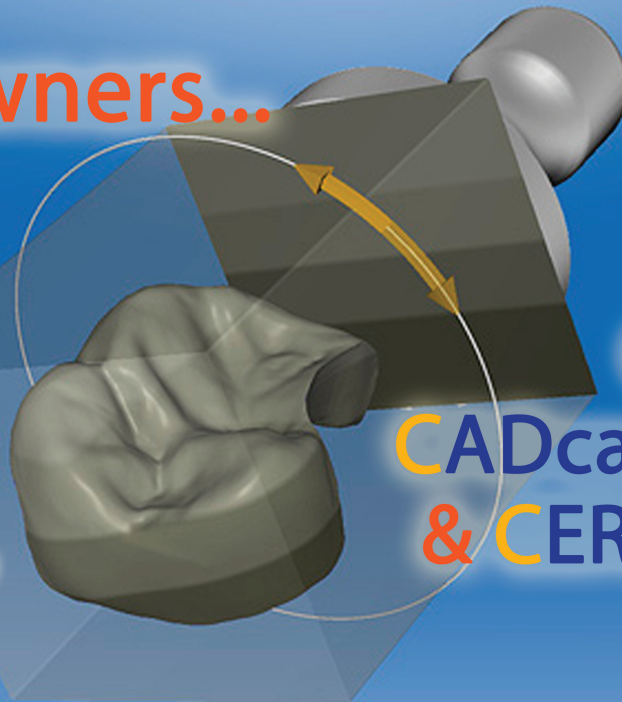


CEREC® Owners...



Introducing.. CADcam 101 CADcam Advanced & CEREC® In-Office Coaching

You have already made the investment,
it's time to collect that \$69,840 dividend! Every year!

We have 3 programs that tailor to your needs:

* CAD/cam101

- What is CAD/cam Dentistry?
- Why CAD/cam Dentistry is the wave of future?
- How can anyone get onto the CAD/cam wave?
- Difference between CAD/cam & PFM
- 3 P of CAD/CAM Dentistry
- Preparation of CAD/CAM crowns
- CAD/CAM cementation requirements
- How to add about \$69,840 to your profit?

* CAD/cam Advanced

- What can one do to have predictable results
- Case Reviews - learn from other's mistakes
- How can you get the most out of your investment?
- What else can we use CAD/cam for?
- CAD/cam intergration with other equipment
- Impression-free practice, myth or reality?
- What else can I do to add to that \$69,840 in dividend?

* CEREC in-office Coaching

- The best way of learning and incorporating CEREC
- Individually tailored program to help you with your cases
- available in 3 days, 9 days programs

* CEREC Assistant /Associate Training

- We have program to train your assistant to do scanning, designing, milling and polishing for you
- We can also help to train your new Associates

Registration Information:

Date:	Friday, March 14, 2014	CADcam101
	Tuesday, May 13, 2014	CADcam Advanced
	Tuesday, June 24, 2014	CADcam101
	Friday, July 18, 2014	CADcam 101
	Friday, Aug 15, 2014	CADcam Advanced

Time: 5:30pm Registration
6:00pm to 9:00pm Lecture
3 AGD CE credits

Location: 1HourTooth - Boston
332 Newbury Street, 2nd Floor
Boston, MA 02115

Telephone: (877) 692-3732

Tuition: CADcam 101 \$595
(\$100 discount if paid in full 3 weeks prior to class)
CADcam Advanced \$895

includes: free admission to one additional associate doctor.
One free crown (\$450 in value), Free samples from 3M
sandwich, snacks and drinks

After-hour: All are invited for after hour drinks at Sonsie

Space is limited, full tuition is payable by credit card or check to "1HourTooth", fully refundable 3 weeks prior to class date, \$50 processing there after..



1HourTooth™
.com
1-877-my-CEREC (69-23732)
coaching@1HourTooth.com
332 Newbury St. Boston, MA 02115